

Healthy New Towns programme

Healthy City Design Conference

Dr Sara McCafferty
Danny McDonnell

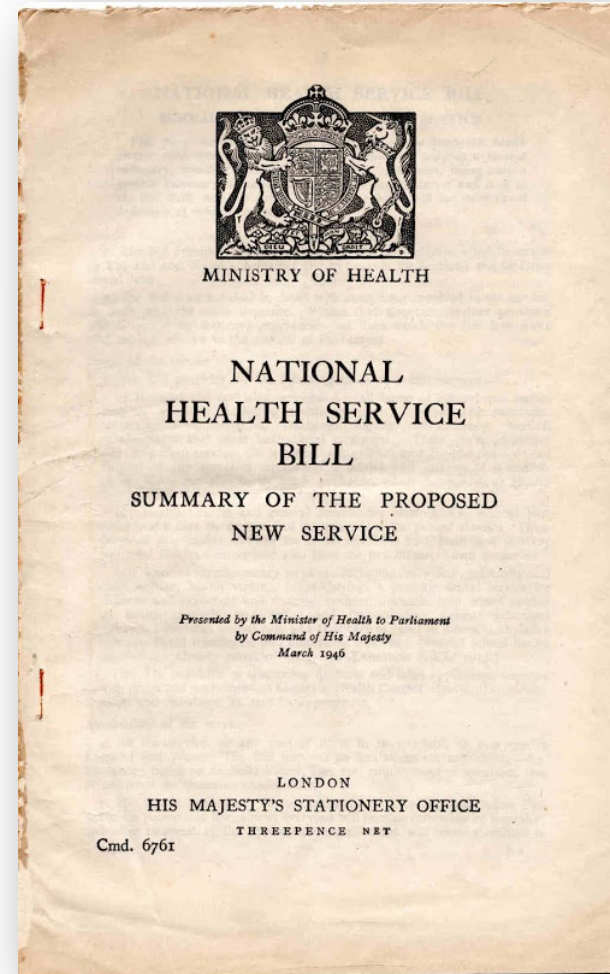
#HealthyNewTowns

17 October 2017

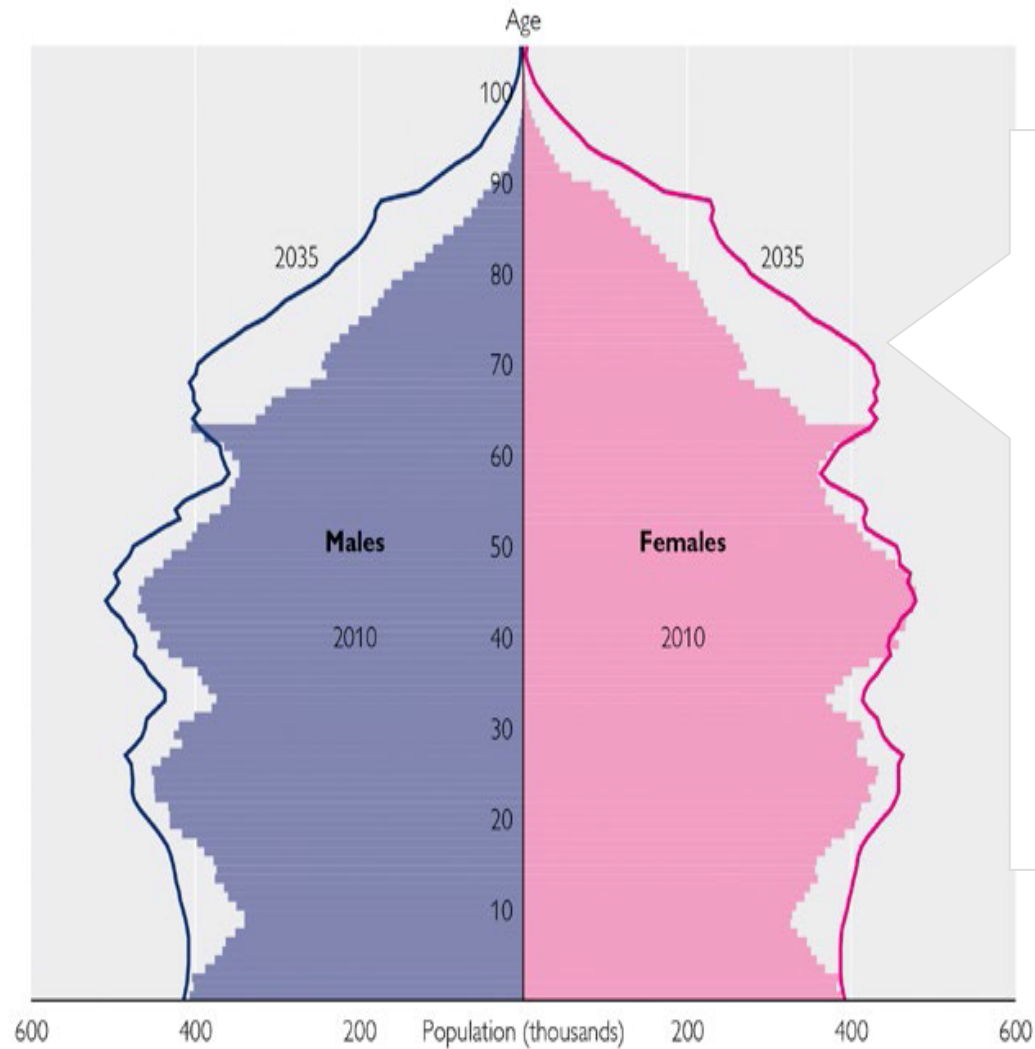
Next year, the NHS turns 70, along with the Town and Country Planning Act...

Town and Country Planning Act, 1947.

10 & 11 GEO. 6. CH. 51.



An ageing population...

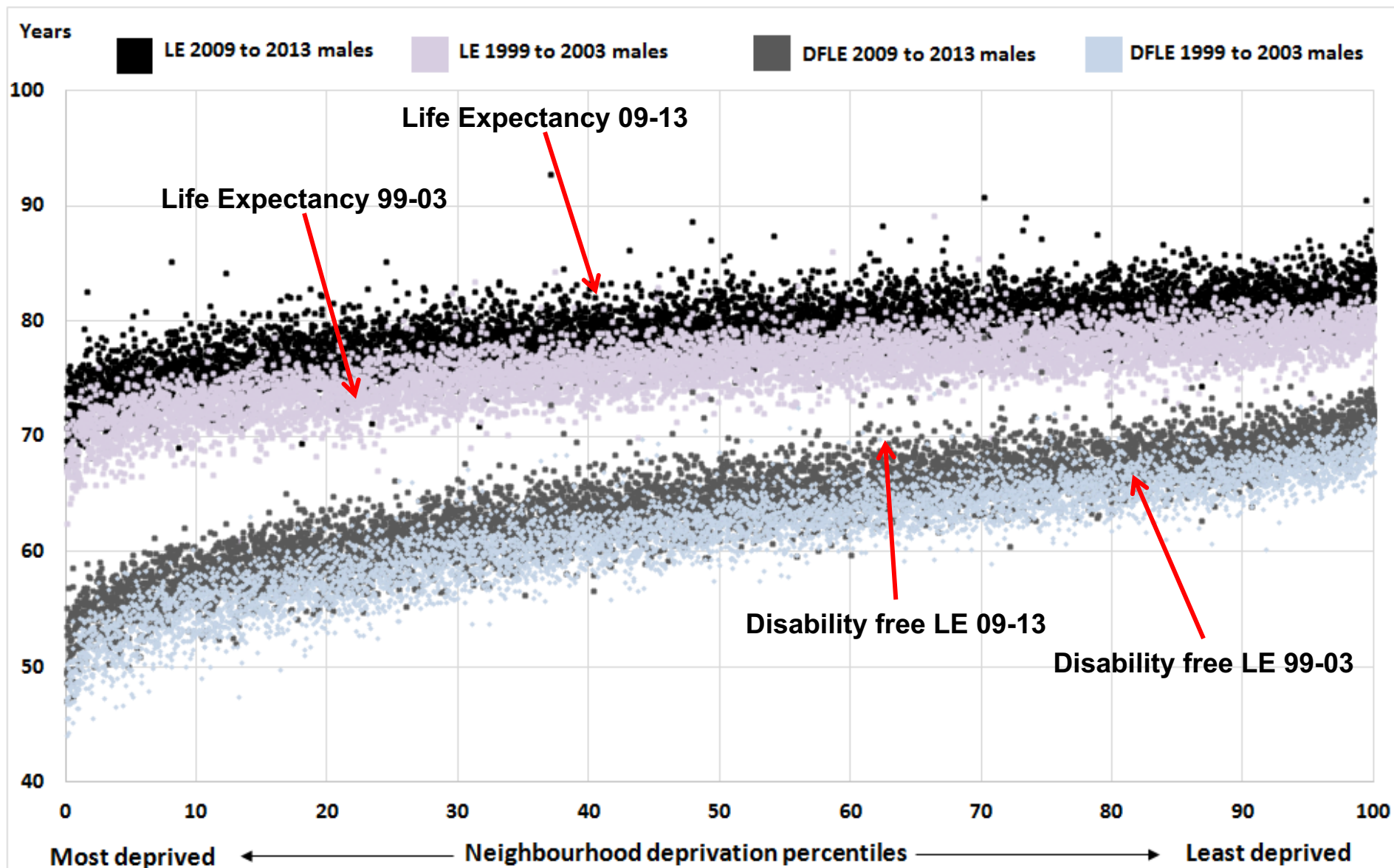


Already over 9m people aged over 65 in England (iii)

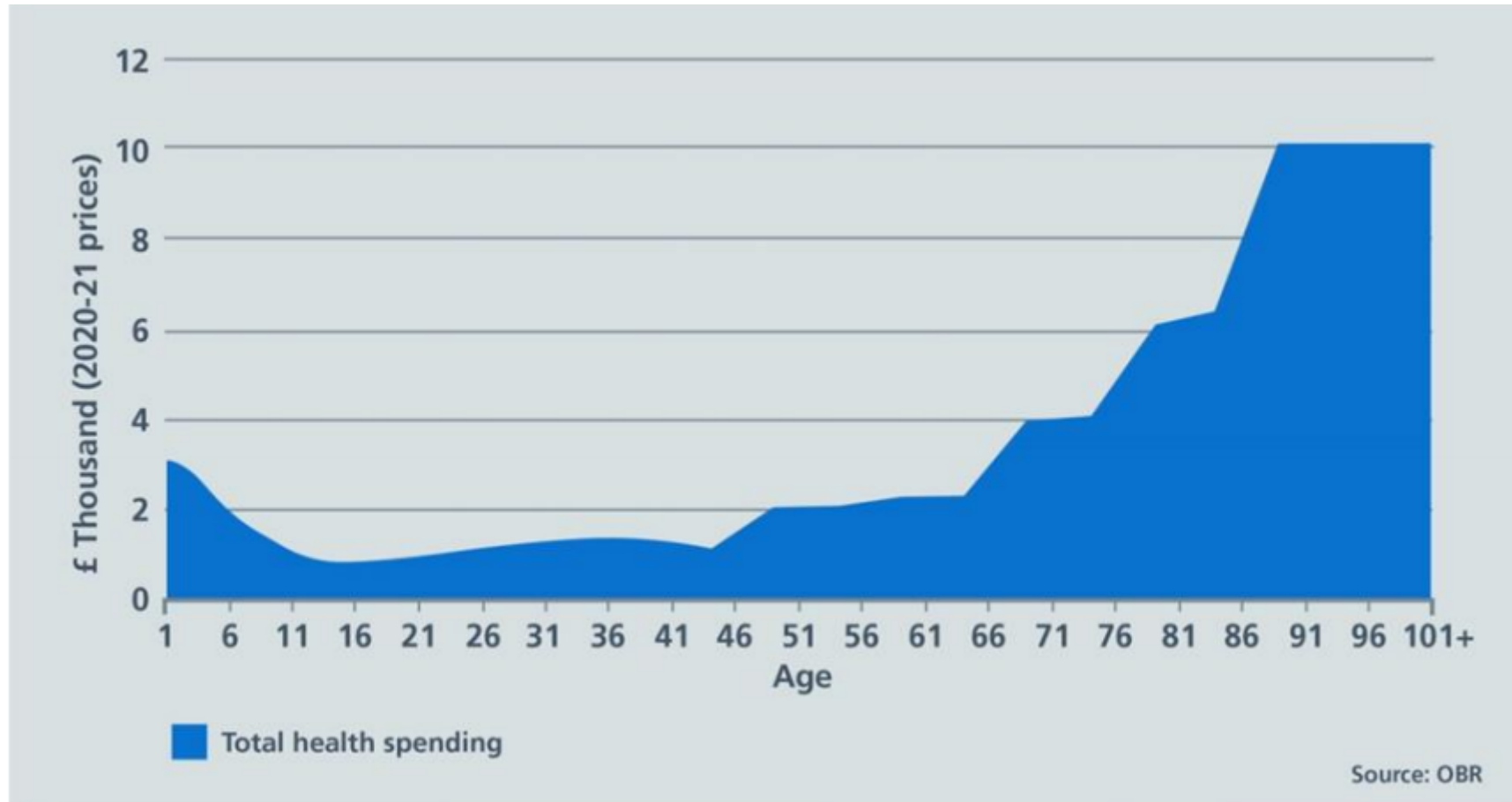
Households headed by someone over 65 are projected to account for 59% of household growth (2011-2021) (iv)

Estimated and projected age structure of the UK population (thousands), mid-2010 and mid-2035(iii)

Life expectancy and disability free life expectancy



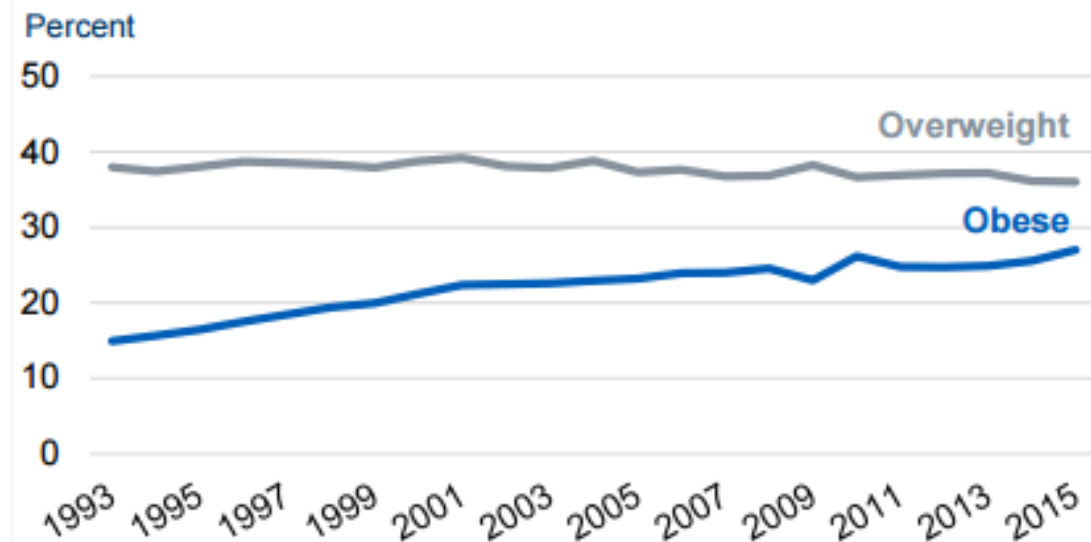
Health care spending rises sharply with age...



Source: OBR - Representative profile for age-related health spending

Obesity and physical activity

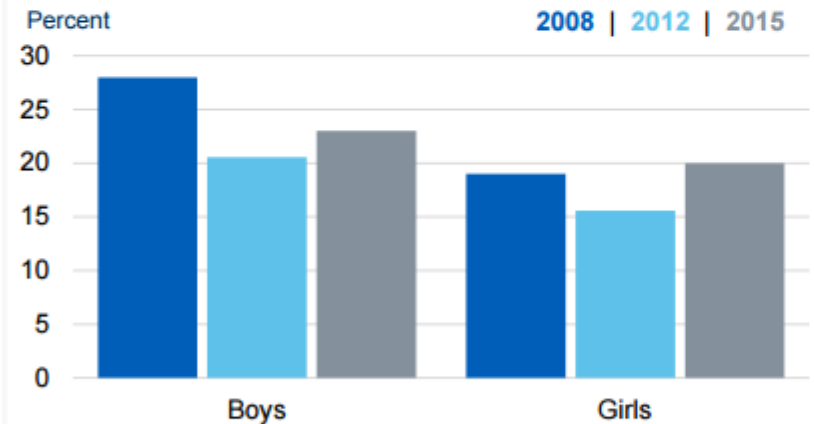
Obesity prevalence increased from 15% in 1993 to 27% in 2015.



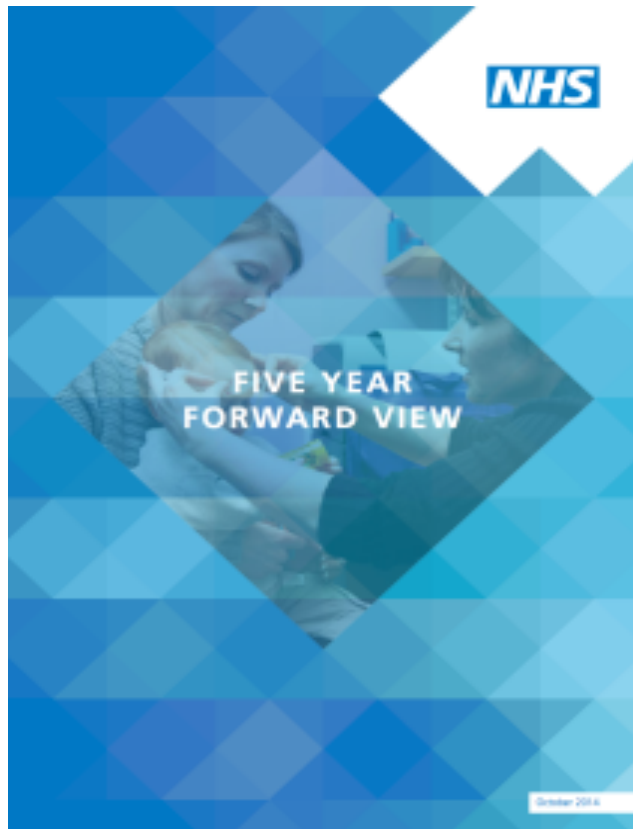
Met physical activity guidelines²

The proportion of boys who met the guidelines increased from 21% in 2012, to 23% in 2015.

The proportion of girls who met the guidelines increased from 16% in 2012 to 20% in 2015.



The Five Year Forward View sets out our ambition to build healthier places



“New town developments and the refurbishment of some urban areas offers the opportunity to design modern services from scratch, with fewer legacy constraints - integrating not only health and social care, but also other public services such as welfare, education and affordable housing.”

Five Year Forward View

*“These areas would take a ‘first principles’ approach to **designing how health and wellbeing should be promoted, and how services should be delivered**, from rethinking the physical design of the infrastructure, to **embracing new technologies and encouraging the deep integration of health and care with supported housing and other public services.**”*

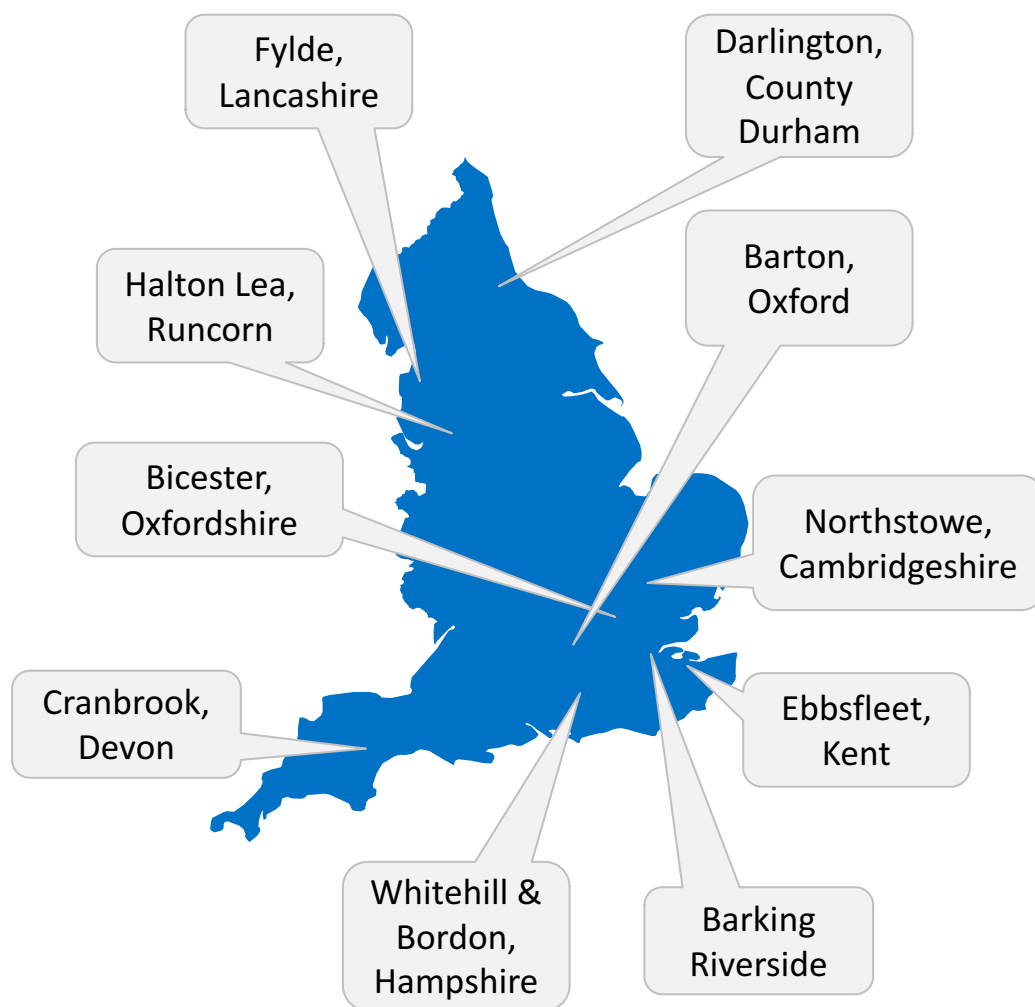
The Forward View into Action

The Healthy New Towns programme has three key aims:

1. To shape new towns, neighbourhoods and communities to **promote health and wellbeing, prevent illness and keep people independent**;
2. To **radically rethink delivery of health and care services**, supporting learning about new models of deeply integrated care, place-based care;
3. To **spread learning and good practice** to other local areas and other national programmes.

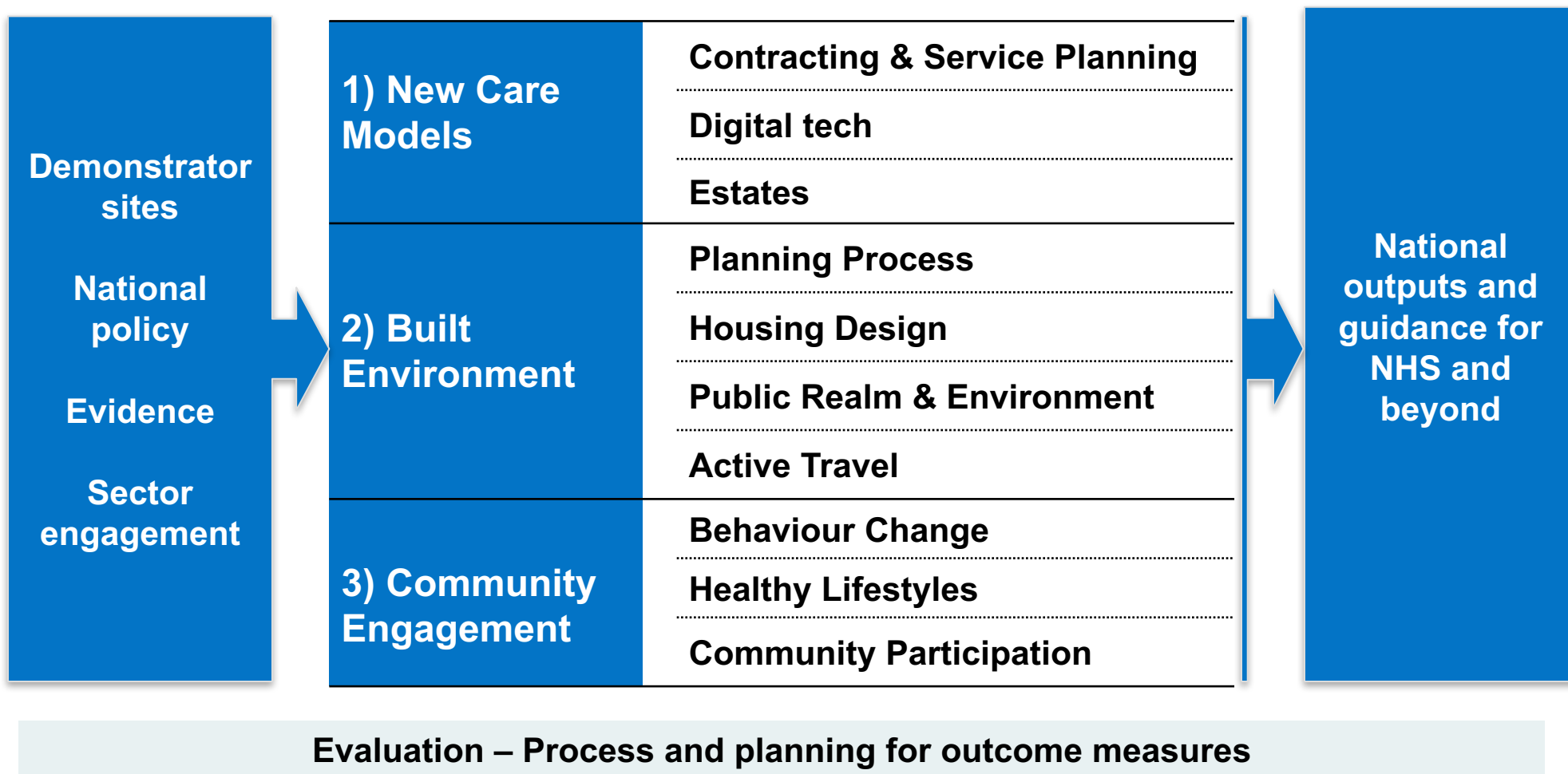
Demonstrator Sites – the core of the programme

114 applications, 10 sites chosen



Site	Region	Approx. number of new homes	Type
Fylde	North	1,400	Greenfield
Darlington	North	2,500	Mixed
Halton	North	800	Brownfield
Bicester	South	6,000	Greenfield
Whitehill & Bordon	South	3,350	Brownfield
Cranbrook	South	8,000	Greenfield
Barking	London	10,800	Brownfield
Northstowe	East	10,000	Greenfield
Ebbfleet	South	15,000	Brownfield
Barton	South	890	Greenfield

Healthy New Towns – Programme structure



Healthy New Towns approach

Locally led

- Within nationally set priorities
- Local health needs/priorities
- Alignment with STP and wider strategies
- Community involvement

Replicability and spread

- Sustainable & replicable
- Encouraging collaboration
- Building on existing knowledge
- High quality co-produced outputs
- Significant buy-in/engagement

Funding & Support

- Capacity not capital
- Resource not revenue
- National expertise
- Account management

Partnership working

- Bringing together disciplines
- Strategic partners at national level
- Collaboratives between sites
- Local collaboration between organisations

Partnership is the key for Demonstrator Sites...



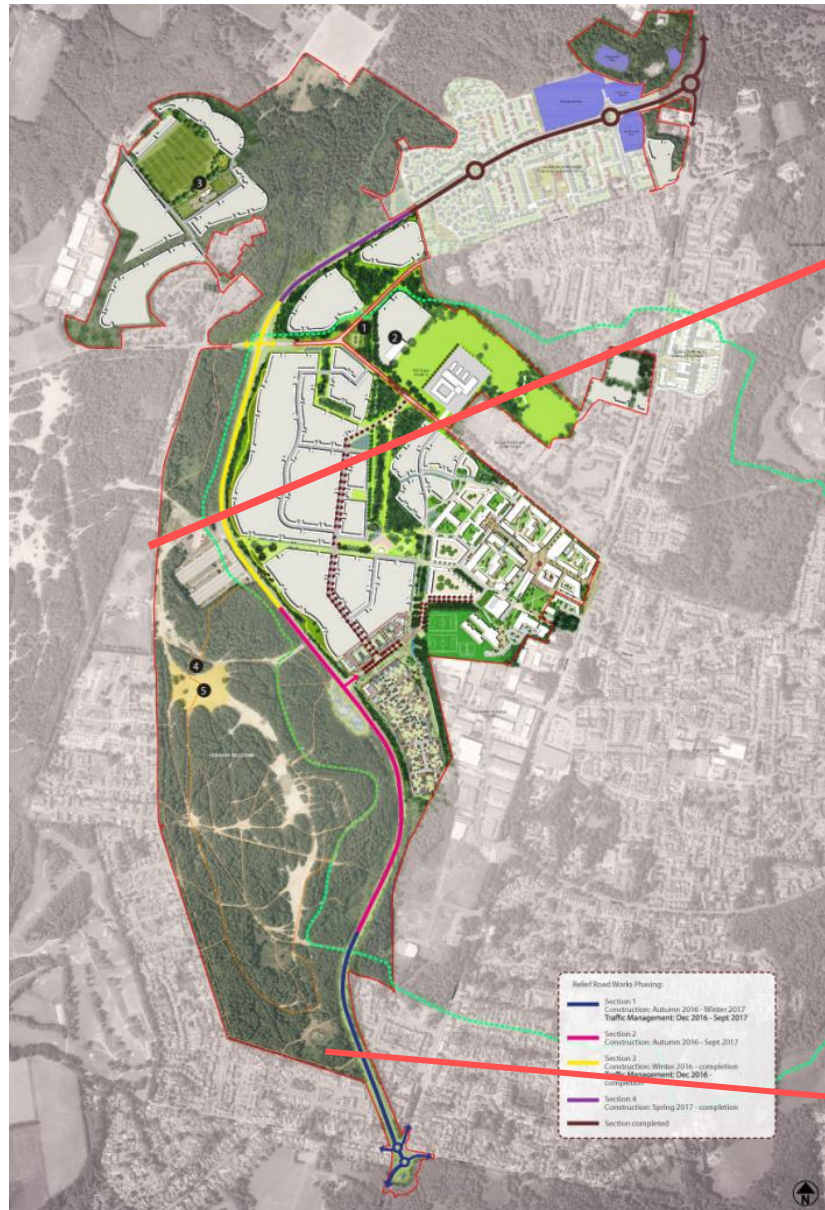
Bicester's health routes



Try a local 5k health route



Whitehill & Bordon – Hogmoor inclosure



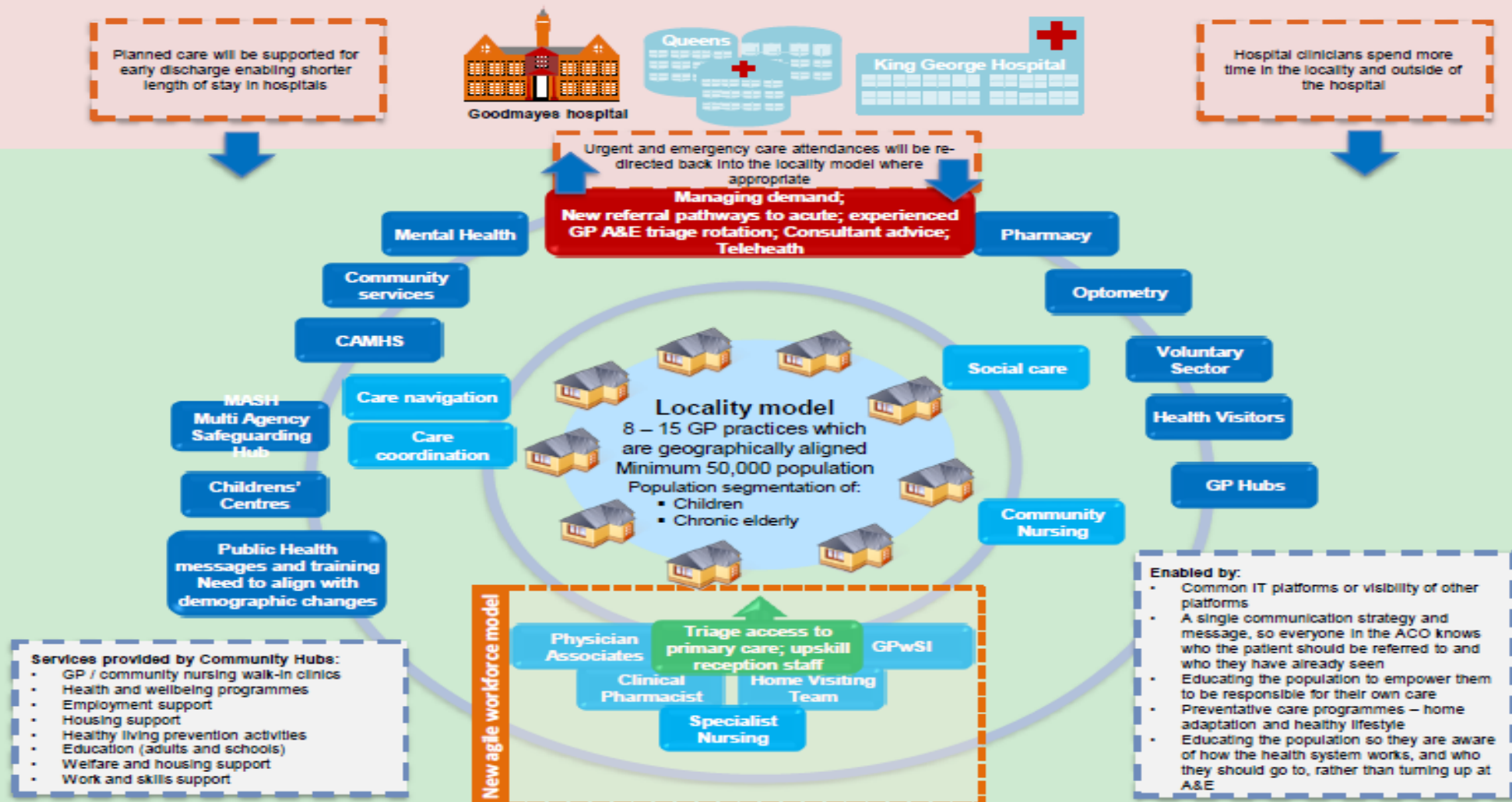
Credit: Whitehill & Bordon Regeneration Company and Urban Place Lab

Designing infrastructure around health - Barking new model of care

Introducing our locality model

Hospitals

Locality delivery model



Contributors to the design of the locality model:



GPs

Local authority members



Voluntary sector



Clinicians (NELFT and BHRUT)



The public



We have spoken with almost 8,000 people who work in health and care, or live, in Barking and Dagenham, Havering and Redbridge; the outputs of these conversations and surveys have fed into the development of the locality model.

The programme will also provide learning to enhance the NHS contribution to increased housing supply

Use of NHS surplus land

- Department of Health has a target to enable the development of 26,000 homes on NHS land by 2020
- We will generate lessons that can be applied by the NHS in meeting the housing target and benefits will be returned to wider system

Opportunities for new housing models

- Developing viable models for the delivery of specialist housing where a direct link with NHS services is beneficial (for example, alternatives to care homes or step-up/down facilities)
- Exploring new commercial models that would enable NHS organisations to use land strategically, for example by delivering affordable housing for staff

Opportunities to apply wider learning

- Using ownership of land to directly influence the design of developments to ensure healthy environments, for example by:
 - driving delivery of healthy food environments;
 - enforcing healthy housing standards; or
 - requiring incorporation of design features that encourage physical activity

Interest in the programme is generating momentum...

the guardian

world sport football opinion culture business lifestyle fashion environment tech travel all sections

law scotland wales northern ireland education media

UK families could get money off shopping bills if they hit exercise goals

SatApps Catapult @SatAppsCatapult · Aug 8

Project Update: Healthy New Towns - we're exploring the use of satellite applications in #town developments - media.sa.catapult.org.uk/wp-content/upl...

Design Council @designcouncil · Sep 8

What is a healthy new town? goo.gl/6yzVB2 Piece by @Danny_McDonnell From @NHSEngland #healthyplaces

BICESTER HEALTHY NEW TOWN

BBC Sign in News Sport Weather iPlayer TV Radio More Search

NEWS

Home UK World Business Politics Tech Science Health Family & Education Entertainment & Arts

Health

NHS to help create 'healthy new towns' Top Stories

Healthy New Towns DL @HealthyNewTowns Following

Great to see Healthy New Towns being discussed on #VictoriaLIVE this morning 🍏 Interesting to hear what other sites are up to 🚴 #HNT2017 ❤️

#VictoriaLIVE

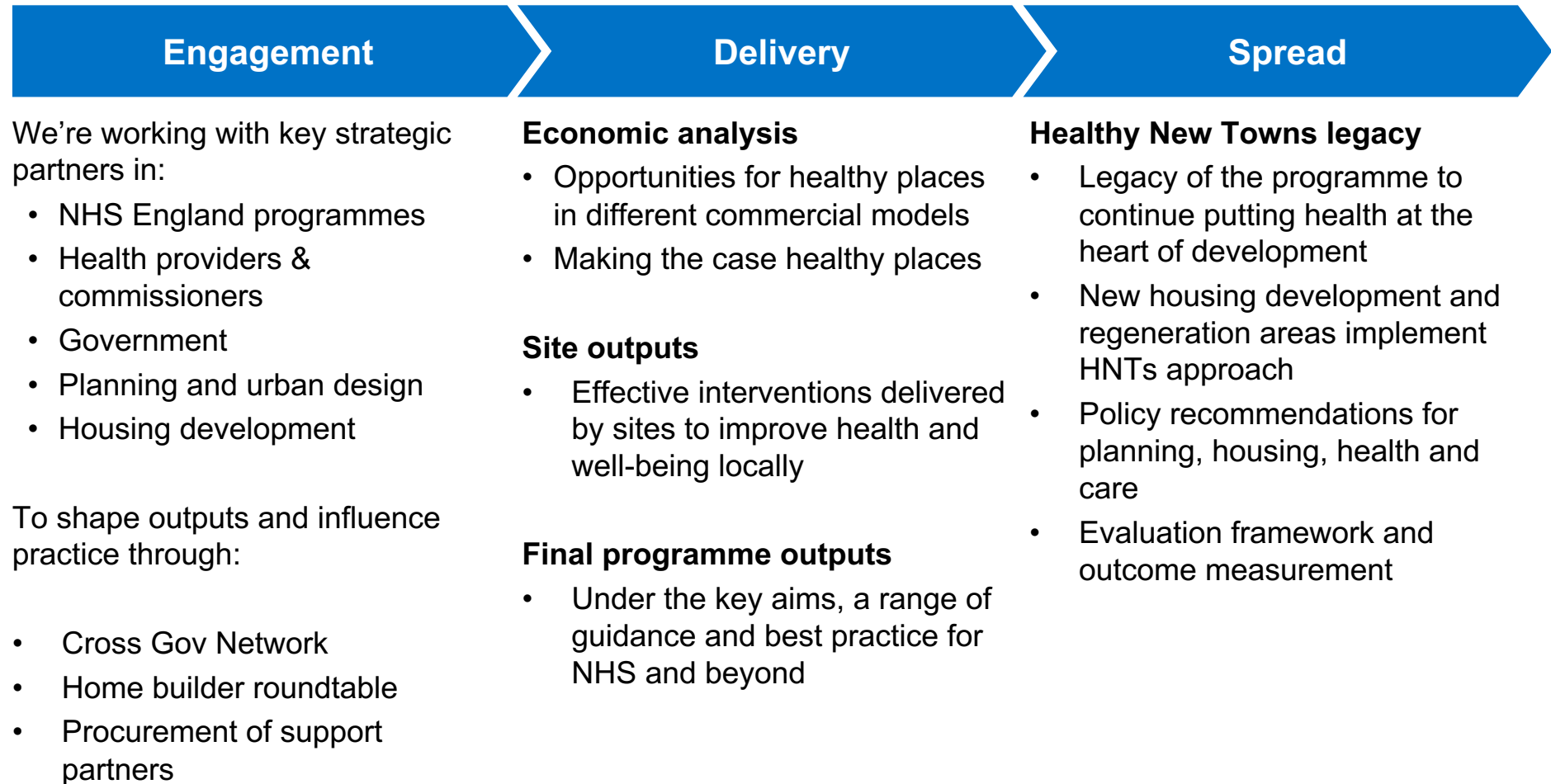
The Daily Telegraph NATIONAL NEWSPAPER OF THE YEAR

Keep fit to get money off weekly shopping

NHS 'design for life' proposes discounts and free bikes to encourage healthy living

Prue's first Bake Off tip: record it to skip the ads

Where does all this lead?



Q&A...

#HealthyNewTowns