



Organised by



In collaboration with



Journal partner



HEALTHY CITY DESIGN INTERNATIONAL

RESEARCH • POLICY • PRACTICE

10-11 OCTOBER 2022

ROYAL COLLEGE OF PHYSICIANS, LONDON

PRELIMINARY PROGRAMME

THE NEXT FRONTIER

DIVERSITY, INCLUSIVITY AND OPPORTUNITY FOR ALL

W: www.healthycitydesign.global | E: info@salus.global



Silver Knowledge Leaders

Bronze Innovation Leaders

Event partners



Timetable of events

July 2022

Launch of Preliminary Programme and online registration

8 September 2022

Deadline speaker registration

27 September 2022

Deadline for extended early-bird registration

22 September 2022

Deadline for full written papers for publication at www.salus.global

Monday 10 October 2022

08.45-18.00: Healthy City Design 2022 International Congress

18.30-21.30: Evening Networking Dinner

Tuesday 11 October 2022

08.45-18.00: Healthy City Design 2022 International Congress

THE NEXT FRONTIER

DIVERSITY, INCLUSIVITY AND OPPORTUNITY FOR ALL

Our cities have pulled back from the brink in the aftermath of the global pandemic and are now on the road to renewal. There have been many lessons for urban planners, architects, policymakers and public health professionals to absorb from the coronavirus crisis that also apply to planetary health action – none more so than the need to make our cities more inclusive, diverse, and equitable to create opportunities for all.

The extent to which the pandemic truly tested social and health resilience has led to growing international resolve to create a new urban future in which issues of health equity, social value, diversity, access and opportunity in our cities and communities are addressed, enabling health-creating societies to flourish.

Smart technology, science and innovation will be influential in shaping this future. So will new approaches to urban design, planning and governance that support individuals and communities to become more productive, resilient and self-sufficient in response to the climate crisis. Culture and the arts will also be vital in deepening social connectivity and improving mental health and wellbeing in this new urban landscape.

Far-reaching research and theoretical models will be needed to underpin an evidence-based approach in parallel with a celebration of innovative practice and entrepreneurship, as our cities are redesigned to embrace the circular economy and planetary health principles and actions that also underpin health equity.

Definitions of inclusive design have broadened in response to recent events, shifting from a focus on the rights of older and disabled people in relation to the built environment to embrace race and gender, technological exclusion, and economic fairness in relation to work, services and systems. Inclusive

health has similarly advanced in addressing health disparities with its emphasis on two main principles: equitable access and full participation.

The future city: ESG as a lever for inclusive health

This is an exciting time to fast-forward to reimagine and remake the city for all. 'The Next Frontier' will see new amalgams of expertise and knowledge addressing the vital questions around inclusion and diversity in the professional disciplines in design, technology, urbanism and health.

Business organisations will lean into the city as part of their ESG (environmental, social and governance) commitments. Architects and engineers will plan for the complexity that comes with including a wider range of needs and desires. Public health experts will pilot fresh approaches and technology providers will seize the moment.

Previous editions of the Healthy City Design International Congress have looked at creating a shared culture of wellness, reducing health inequalities, building resilience in cities and dealing with the impact of Covid-19. In 2022, we pull all of these themes together and ask: how can designing for inclusion, diversity and social equity support healthier lives in a thriving urban realm?



Keynote speakers

Bridging the gap between research, policy and practice

The Healthy City Design 2022 (HCD 2022) International Congress & Exhibition is a global forum for the exchange of knowledge on the research, policy and practice of designing healthy and sustainable cities and communities.

Each day will open and close with keynote plenary sessions before splitting up into four streams (eight in total). Day one will focus on: homes and neighbourhoods; population health; planetary health; and transport and mobility. Day two will cover: urban design, planning and public realm; smart cities, work and workplace; inclusive and accessible design; and designing for young and old.

The event will also host a Video + Poster gallery of innovative research and projects, and a knowledge-focused exhibition of design solutions for cities, communities and workplaces. The Congress organisers are also delighted to invite participants to join the programme committee for an Evening Networking Dinner with live jazz from the Royal Academy of Music on Monday 10 October.



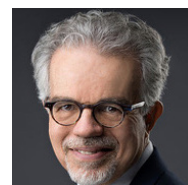
Prof Jeremy Myerson

Emeritus professor,
Royal College of Art;
Director, WorkTech Academy



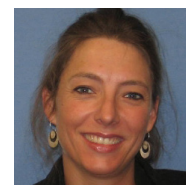
Marc Sansom

Director,
SALUS Global
Knowledge Exchange



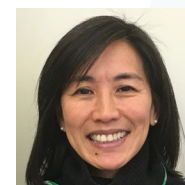
Carlos Dora MD

President, International
Society for Urban Health,
Switzerland



**Nathalie Laure
Roebbel PhD**

Unit head, urban
health, World Health
Organization, Switzerland



**Dr Montira Pongsiri
PhD, Mph**

Senior advisor, climate
change and health, Save
the Children, USA



Lord Nigel Crisp

Author and independent
crossbench member,
House of Lords, UK



Lord Richard Best

Member, House of Lords,
UK



Prof Rachel Cooper

OBE, PhD, Professor of
design management and
policy, Lancaster University;
Main commission member,
The Commission on
Creating Healthy Cities, UK



Rama Gheerawo

Director, Helen Hamlyn
Centre for Design, Royal
College of Art, UK



Ab Rogers

Founder and creative
director, Ab Rogers
Design, UK

Organised by



08.00 REGISTRATION OPENS

Keynote plenary



Session 1

Opening plenary

Chair: Jeremy Myerson, Emeritus professor, Royal College of Art; WorkTech Academy, UK

08.45 Welcome and introduction

Jeremy Myerson, Royal College of Art; WorkTech Academy, UK

09.00



Keynote address: Creating healthier urban environments: Turning knowledge into action

Carlos Dora MD, President, International Society for Urban Health, Switzerland

09.20



Keynote address: The urban health agenda at WHO

Nathalie Laure Roebbel PhD, Unit head, urban health, World Health Organization, Switzerland

09.40



Keynote address: Save the Children: A systems-based approach to taking action on climate, health and equity

Montira Pongsiri PhD, MPH, Senior advisor, climate change and health, Save the Children, USA

10.00 Panel discussion

10.15–10.45 VIDEO + POSTER GALLERY, COFFEE AND NETWORKING



Session 2

Homes for people and planet

Chair: Sunand Prasad, UK Green Building Council; Penoyre & Prasad, UK

10.45

Building for Quality of Life

Matthew Morgan, Quality of Life Foundation, UK
Hani Salih, Quality of Life Foundation, UK

11.05

Creating healthier neighbourhoods: Insights from implementing 20-minute neighbourhoods in England

Gemma Hyde, Town and Country Planning Association, UK

11.25

Site Haute – rising to the challenge of sustainable housing

Coen van den Wijngaert, archipelago, Belgium
Maarten Lambrechts, archipelago, Belgium

11.45

Home of 2030

Philip Watson, HLM Architects, UK
Izzy Butcher, HLM Architects, UK

12.05

Panel discussion

12.30–14.00

VIDEO + POSTER GALLERY, LUNCH AND NETWORKING



Session 3

Affordable housing for all

Chair: Janet Sutherland, Academy of Urbanism, UK

14.00 **Back to the future: A case study of Silicon Valley's Ladera Housing Cooperative**

T. F. Tierney, URL: Urban Research Lab, University of Illinois Urbana-Champaign, USA

14.20 **Future of housing – collaborative affordable housing and the value of participation to improve the long-term health and wellbeing of citizens**

Sem Lee, UCL Institute for Environmental Design and Engineering (IEDE), UK

14.40 **The living street**

Noor Itraiky, HLM Architects, UK
John Richards, HLM Architects, UK

15.00 **Panel discussion**

15.30–16.00 **VIDEO + POSTER GALLERY, COFFEE AND NETWORKING**



Session 4

Green and blue cities are growing social capital

Chair: Max Farrell, The London Collective, UK

16.00–17.00 **Panel debate**

The solutions to the biggest challenges facing cities around the world, as we deal with the consequences of climate change and the biodiversity crisis, can be found within the natural environment. Our green and blue spaces provide critical resources, address overheating, and improve air quality. We are also acutely aware of the link between urban parks and our physical and mental health, having lived through a global pandemic. What is less well understood is the link between well-planned and evenly distributed natural spaces, social value and community cohesion. Green infrastructure can help level up communities within our cities.

So how can we increase the natural capital within our urban environments, and what impact can this have on citizens, as well as vegetation, wildlife and the ecosystems they support? Three years ago, London became the world's first 'national park city'. Since then, Adelaide has become one, too, and many more are planned.

In this panel discussion, we will hear from the Landscape Institute as well as the National Park City Foundation, as well as learn the outcomes of #ParkPower, a crowdsourced vision for the future of London's green spaces led by the LDN Collective in collaboration with the City of London. We will also hear from Therme Group, whose ambition is to provide water-based wellbeing as social infrastructure within cities, including London, Manchester, Glasgow, Toronto, Singapore and New York. The economic benefits of green and blue spaces are increasingly clearer, with ESG investment targeting this type of critical infrastructure.

Panel: James Mark, Therme Group, UK
Juliemma McLoughlin, City of London Corporation, UK
Mark Cridge, National Park City Foundation, UK
Sue Morgan, Landscape Institute, UK

Keynote plenary



Session 5

Keynote address

Chair: Chris Liddle, HLM Architects, UK

17.00



Keynote address: Turning the world upside down again: Global health in a time of pandemics, climate change and political turmoil

Lord Nigel Crisp, Author and independent crossbench member, House of Lords, UK

17.40–18.00 **Closing address**

Jeremy Myerson, Royal College of Art; WorkTech Academy, UK

18.30–21.30 **EVENING NETWORKING DINNER, LIVE MUSIC AND KEYNOTE ADDRESS**

What creates healthy cities? The work of the Commission on Creating Healthy Cities and next steps



Lord Richard Best, Member, House of Lords, UK

Supported by:

HLM Architects **LLEWELYN DAVIES**

Stream 2 begins at 10.45 in the Dorchester Library, after the day's opening plenary session (08.45–10.15).



Session 6

The hospital as an anchor for community health

Chair: Richard Darch, Archus, UK

- 10.45** **LIFE RESYSTAL – Climate change REsilience framework for health SYStems and hospiTALs**
Dr Kristen MacAskill, on behalf of Health Care Without Harm; Centre for Sustainable Development, University of Cambridge, UK
- 11.05** **Hospitals – heal thy neighbours**
Craig Lewis, CallisonRTKL, USA
Beau Herr, CallisonRTKL, USA
- 11.25** **Community engagement in planning a health-oriented development anchored by a regional hospital: A case study in Alaska, USA**
Francesca E. Jimenez, HDR, USA
Jeri Brittin, HDR, USA
- 11.45** **King's Hall Health & Wellbeing Park, Belfast**
Gonzalo Vargas del Carpio, Todd Architects, UK/Ireland
- 12.05** **Panel discussion**
- 12.30–14.00** **VIDEO + POSTER GALLERY, LUNCH AND NETWORKING**
- 12.40–13.50** **Lunchtime workshop: Introducing future generations of the public health spatial planning workforce in translating healthy places evidence into practical reality**

Organised by:



HEALTH & WELLBEING in PLANNING

For more details, please see page 17



Session 7

Climate and health in the city

Chair: Audrey de Nazelle, Imperial College London, UK

- 14.00** **A London for health: Building a population health partnership and call to action**
Dr Angelique Mavrodaris, Department of Health and Social Care, UK
Katie Hunter, Greater London Authority, UK
- 14.20** **Conceptual framework: Towards an integrated health indicator approach for local government**
Albert Ferreira, City of Cape Town, South Africa
- 14.40** **Ebbfleet Garden City: Healthy New Towns legacy**
Kevin McGeough, Ebbfleet Development Corporation, UK
Mary Rouse, Ebbfleet Development Corporation, UK
- 15.00** **Panel discussion**
- 15.30–16.00** **VIDEO + POSTER GALLERY, COFFEE AND NETWORKING**



Session 8

Place-based health assets

Chair: Beau Herr, CallisonRTKL, USA

- 16.00** **Data-driven healthcare: How spatial analysis can drive place-based population health management and urban planning**
Darshana Chauhan, Coplug, UK
Reem Shamlakh, Coplug, UK
- 16.20** **Upstreaming health and wellbeing through outcomes-led design**
Paul Simkins, Arup, UK
- 16.40–17.00** **Panel discussion**

Stream 2 will be brought to a close at 17.00, whereupon delegates are invited to return to the Wolfson Theatre for the day's closing plenary session (17.00–18.00).

Stream 3 begins at 10.45 in the Council Chamber, after the day's opening plenary session (08.45–10.15).



Session 9

The case for green-blue infrastructure
Chair: Marcus Grant, Cities & Health, UK

- | | |
|-------------|---|
| 10.45 | Using green infrastructure to mitigate effects of air pollution in school playgrounds
Carys Alder, Trees for Cities, UK |
| 11.05 | Restorative gardens in healthcare facilities and their effects on dementia patients' recovery
Nisrina Muthi Meidiani, University College London, UK |
| 11.25 | Quantifying the biodiversity gains from participatory urban gardening programmes
Ellen Bidulka, Imperial College London, UK
Naomi Paine, Energy Garden, UK
Agamemnon Otero, Energy Garden, UK
C. M. (Tilly) Collins, Imperial College London, UK |
| 11.45 | Avoiding 'green-washing' our developments
Avgousta Stanitsa, Atkins, UK
Chris Massey, Atkins, UK |
| 12.05 | Panel discussion |
| 12.30–14.00 | VIDEO + POSTER GALLERY, LUNCH AND NETWORKING |



Session 10

Sustainable and equitable communities
Chair: Giselle Sebag, International Society for Urban Health, USA

- | | |
|-------------|--|
| 14.00 | Circular economies for sustainable health and wellbeing
Mark Drane, Urban Habitats; WHO Collaborating Centre for Healthy Urban Environments, UWE Bristol, UK
Cheryl Williams, Public Health Wales, UK |
| 14.20 | Understanding climate-related health vulnerability and social inclusion in greening cities
Ffion Carney, Atkins, UK
Avgousta Stanitsa, Atkins, UK |
| 14.40 | South Essex green and blue infrastructure study: Creating healthy cities for the whole community of life
Alexandra Steed, Alexandra Steed URBAN, UK |
| 15.00 | Panel discussion |
| 15.30–16.00 | VIDEO + POSTER GALLERY, COFFEE AND NETWORKING |



Session 11

Guiding principles for planning healthy communities
Chair: Mario Bozzo, SALUS, UK

- | | |
|-------|---|
| 16.00 | Veraine: Planning a health-creating community
In this session, a new ecosystem approach to designing and planning healthy and health-creating communities is explored. The session will discuss a set of guiding principles developed to create a community where citizens have trust in the way the community works; for example, that it is a safe, secure and well-functioning community where laws and regulations are legitimate and aligned with values such as diversity, equity and inclusiveness. It will ensure citizens have the resources they need – economic, public and social. And it will create the conditions for people to live meaningful and purposeful lives.
The session will draw on the experiences of global exemplars, such as Hammarby Sjöstad in Stockholm, Bicester healthy new town in the UK, the Atlanta Beltline in the USA, and ReGen Villages, a new concept for resilient neighbourhoods. It will also discuss innovative projects, such as Energy Garden in the UK, and technologies such as Vertical Futures, both of which have applied the latest ideas in health creation and planetary health.
And it will examine how these exemplars are informing ambitious developments like Veraine, a proposed new community in Pickering, Ontario, with a vision to provide its residents with the resources, capabilities and sense of purpose in their daily lives to flourish and lead a good and healthy life. |
|-------|---|

Panel: Mark Drane, Urban Habitats; WHO Collaborating Centre for Healthy Urban Environments, UWE Bristol, UK
Giselle Sebag, International Society for Urban Health (ISUH), Spain
Agamemnon Otero, Energy Garden, UK

Stream 3 will be brought to a close at 17.00, whereupon delegates are invited to return to the Wolfson Theatre for the day's closing plenary session (17.00–18.00).

Stream 4 begins at 10.45 in the Sloane Room, after the day's opening plenary session (08.45–10.15).



Session 12

Transport and the changing urban form
Chair: Clare Wildfire, Mott MacDonald, UK

- 10.45** **ReCharge LA: From pump to plug**
Francesca Birks, ERA-co, USA
Chris Green, ERA-co
Russell Fortmeyer, Woods Bagot, USA
- 11.05** **Air pollution found to be reduced both in and around low-traffic neighbourhoods in Islington, London**
Audrey de Nazelle, Imperial College London, UK
Xiuleng Yang, Imperial College London, UK
- 11.25** **Ontario Line urban developments, supporting transit-orientated communities**
Paul McGill, HDR, UK
Celia Johnstone, HDR, Canada
- 11.45** **An inclusive approach to rethink linear urban voids**
Cecilia Zecca, Royal College of Art, UK
- 12.05** **Panel discussion**
- 12.30–14.00** **VIDEO + POSTER GALLERY, LUNCH AND NETWORKING**



Session 13

Transport planning for community health
Chair: Marc Sansom, SALUS, UK

- 14.00** **Framing community health for regional transportation planning**
Jeri Brittin, HDR, USA
- 14.20** **Camden Connected: Co-designing accessible and inclusive transport solutions**
Liam Hinshelwood, We are Snook, UK
Jessica Lawson, Camden Council, UK
Fozlu Miah, Camden Council, UK
- 14.40** **Using complexity-informed methods to explore population health interventions: Exploring car dependency in Belfast**
Dr Holly Weir, Queen's University Belfast, UK
- 15.00** **Panel discussion**
- 15.30–16.00** **VIDEO + POSTER GALLERY, COFFEE AND NETWORKING**



Session 14

Designing active travel
Chair: Jeri Brittin, HDR, USA

- 16.00** **"But can I walk to work?" Spatial modelling and data analysis to explain how the built environment supports walking**
Ed Parham, Space Syntax, UK
- 16.20** **Active travel community co-production pilot**
Dr Rosie Rowe, Oxfordshire County Council, UK
Josh Lenthall, Active Oxfordshire, UK
- 16.40–17.00** **Panel discussion**

Stream 4 will be brought to a close at 17.00, whereupon delegates are invited to return to the Wolfson Theatre for the day's closing plenary session (17.00–18.00).



08.00 REGISTRATION OPENS

Keynote plenary



Session 15

Day 2, Opening keynotes

Chair: Sunand Prasad, UK Green Building Council; Penoyre & Prasad, UK

08.45 Welcome and introduction

Chair: Sunand Prasad, UK Green Building Council; Penoyre & Prasad, UK

09.00



Keynote address: What creates healthy cities?

Rachel Cooper OBE, PhD, Professor of design management and policy, Lancaster University; Main commission member, The Commission on Creating Healthy Cities, UK

09.20



Keynote address: Creative leadership in cities: Born from design

Rama Gheerawo, Director, Helen Hamlyn Centre for Design, Royal College of Art

09.40



Keynote address: Design and the Art of Care: The hospital as an anchor for health equity and community renewal

Ab Rogers, Founder, Ab Rogers Design, UK

10.00 Panel discussion

10.15–10.45 VIDEO + POSTER GALLERY, COFFEE AND NETWORKING



Session 16

Inclusive and equitable city-making

Chair: Carolyn Daher, Barcelona Institute for Global Health, Spain

10.45

The Accelerating City Equity (ACE) Project: A framework for assessing equity in cities

Giselle Sebag, International Society for Urban Health (ISUH), Spain
Carolyn Daher, Barcelona Institute for Global Health, Spain

11.05

Can an Indigenous landscape-first approach to design heal our cities?

Michael Moxam, Stantec, Canada
Ken Brooks, BDP Quadrangle, Canada
Matthew P J Hickey, Two Row Architect, Canada

11.25

Inclusive data-driven design: A layered approach to urban space analysis to meet the needs of all

Laura Thomas, PosadMaxwan strategy x design, Netherlands
Marianne Lefever, PosadMaxwan strategy x design, Netherlands

11.45

Design for Inclusion, Equity and Social Justice

Jesse Klimitz, Human Space, Canada
Lorene Casiez, Human Space, Canada

12.05

Panel discussion

12.30–14.00 VIDEO + POSTER GALLERY, LUNCH AND NETWORKING



Session 17

Health on the high street

Chair: Rhiannon Corcoran, University of Liverpool, UK

- 14.00** **Living high streets**
Graham Marshall, Prosocial Place; Ministerial Advisory Group (MAG) Expert advisor; University of Liverpool – Institute of Population Health Sciences, UK
- 14.20** **Selfoss Midtown Iceland**
David Martin, M Worldwide, UK
- 14.40** **Engaged: Re-using empty commercial premises as public toilets, as a model within high street regeneration**
Gail Ramster, Royal College of Art, UK
Jo-Anne Bichard, Royal College of Art, UK

15.00 **Panel discussion**

15.30–16.00 **VIDEO + POSTER GALLERY, COFFEE AND NETWORKING**



Session 18

The urban health agenda at WHO

Chair: Nathalie Laure Roebbel, World Health Organization, Switzerland

- 16.00–17.00** This session will present a selected number of programmes and activities of the World Health Organization, aiming at offering practical guidance on how to integrate health into urban planning and governance.
- The first presentation will discuss the linkages between climate-resilient urban environments and health and the role of urban planning in adaptation and mitigation efforts to both protect communities from climate shocks and stresses and to optimise the health co-benefits of climate action. Case studies from the WHO pilot project on health and climate change urban profiles will be presented to highlight examples of urban initiatives to address climate change through the lens of social equity, health and wellbeing.
- The second presentation will talk about age-friendly environments as better places in which to grow, live, work, play and age, and discuss the role of designers and urban planners in ensuring that communities foster the abilities of older people and their families. It will also showcase some case studies and examples from the work of the members and affiliates of the World Health Organization's Global Network for Age-Friendly Cities and Communities, whose mission is to stimulate and enable cities and communities around the world to become increasingly age-friendly.
- The third presentation will present the key action points of the most recent WHO Global Action Plan on Physical Activity, 2018-2030, focusing on its Policy Action 5 – Creating and Maintaining Safe Environments. It will also discuss how WHO is supporting countries implementing guidelines and practical toolkits for physical activity and providing technical support to assess the return on investment in areas such as walking and cycling, by providing training using the WHO tool on health and economic assessments (HEAT) for walking and cycling.

Panel: Tara Neville, World Health Organization, Switzerland
Dr Thiago Herick de Sa, World Health Organization, Switzerland
Dr Andreia Santos, World Health Organization, UK

Keynote plenary



Session 19

Closing keynote plenary

Chair: Jeremy Myerson, Royal College of Art; WorkTech Academy, UK

17.00 Inclusivity and diversity and the climate-smart city

Planetary health impacts and climate change will and is affecting humans, animals and the natural world everywhere. No one will be left unscathed, but inequalities in society mean that people are affected in different ways at different scales. Low-income communities and the Global South are increasingly experiencing the worst impacts of climate change despite being the least responsible.

But as wildfires range across continental Europe, richer countries are quickly realising the catastrophic consequences of decades of failure to acknowledge climate change and act on it. Even in these countries, the impact of weather extremes will depend on factors such as age, health, gender, ethnicity, socio-economic status, as well as geography and place. In short, the wealthier you are, the better protected you are, while poorer people, just as during the pandemic, are more exposed at home and at work.

Our expert panel will explore how to address and understand the planetary health and climate change challenge from the perspective of designing cities and communities that are more inclusive, more diverse, and healthier for all.

Panel:



Dr Montira Pongsiri PhD, MPhil Senior advisor, climate change and health, Save the Children, USA



Audrey de Nazelle PhD Senior lecturer, Centre for Environmental Policy, Imperial College London, UK



Sunand Prasad Chair, UKGBC; Principal, Penoyre & Prasad, UK



Harry Knibb MRTPI, Development director, Oxford Properties, UK



Carlos Dora MD President, International Society for Urban Health, Switzerland



Ab Rogers Founder and creative director, Ab Rogers Design, UK

17.45 **Close**

Stream 6 begins at 10.45 in the Dorchester Library, after the day's opening plenary session (08.45–10.15).



Session 20

Health in the digital city

Chair: Oliver Jones, Ryder, UK

10.45 **Research evidence translated into practice: Using the Australian Urban Observatory to design healthier and more liveable cities across Australia**
Melanie Davern, RMIT University, Australia

11.05 **Leveraging 'technology and data' for the development of inclusive, safe, and socially cohesive public spaces**
Vaishali Anavatti, BABLE Smart Cities UK, UK
Nikita Shetty, BABLE Smart Cities UK, UK

11.25 **Community-focused technology: The next step in urban placemaking and health interventions**
Christine Hancock, C3 Collaborating for Health, UK
Nathalie Vauterin, C3 Collaborating for Health, UK

11.45 **Digital placemaking for health and wellbeing in North East London**
Dr Jo Morrison, Calvium, UK
Louise Phillips, NHS North East London, UK

12.05 **Panel discussion**

12.30–14.00 **VIDEO + POSTER GALLERY, LUNCH AND NETWORKING**

12.40–13.50 **Lunchtime workshop: Mechanisms to change behaviour in order to achieve healthier places**

Organised by:

THE ACADEMY
OF URBANISM

For more details, please see page 17



Session 21

Inclusive workplaces for people and planet

Chair: Blake Jackson, Stantec, USA

14.00 **The future of equitable and inclusive design in the workplace**
Britni Stone, NBBJ, UK

14.20 **Surviving and thriving in the workplace**
Aaron Taylor, Stantec, USA

14.40 **Making light work: Human-centred lighting for people, for planet and for profit**
Shelley James, Age of Light Innovations, UK

15.00 **Panel discussion**

15.30–16.00 **VIDEO + POSTER GALLERY, COFFEE AND NETWORKING**



Session 22

The future workplace

Chair: Rama Gheerawo, Helen Hamlyn Centre for Design, Royal College of Art, UK

16.00 **The post-Covid "new normal" hybrid workplace: Could this improve our cities, suburbs, commute and mental health while progressing SDGs?**
Gerry Tierney, Perkins&Will, USA

16.20 **Unworking: The reinvention of the modern office**
Prof Jeremy Myerson, WorkTech Academy, UK

16.40–17.00 **Panel discussion**

Stream 6 will be brought to a close at 17.00, whereupon delegates are invited to return to the Wolfson Theatre for the day's closing plenary session (17.00–17.45).

Stream 7 begins at 10.45 in the Council Chamber, after the day's opening plenary session (08.45–10.15).



Session 23

The inclusive city

Chair: Harry Knibb, Oxford Properties, UK

10.45 A vision for the city in 2050 – healthy, attractive, accessible, adaptable and for all

Shaun Andrews, Nexus Planning, UK
Stephen Passmore, Resilience Brokers, UK
Steve Hughes, WPI Economics, UK

11.05 Making cities healthier through approaches to inclusive leadership

Rowena Estwick, Guy's & St Thomas' Foundation, UK

11.25 Walking for everyone

Tanya Braun, Living Streets, UK

11.45 Defining inclusivity: Building and empowering communities

Gail Shillingford, B+H Architects, Canada

12.05 Panel discussion

12.30–14.00 VIDEO + POSTER GALLERY, LUNCH AND NETWORKING

12.40–13.50 Lunchtime workshop: Radically refocusing on people and nature will save our cities

Organised by:

Ryder

For more details, please see page 17



Session 24

The accessible city

Chair: Chris McGinley, Royal College of Art, UK

14.00 Inclusive cities are resilient cities: Evidencing the role of inclusive design in urban futures

Mikaela Patrick, Global Disability Innovation Hub, University College London, UK
Annamae Muldowney, Global Disability Innovation Hub, University College London, UK
Iain McKinnon, Global Disability Innovation Hub, University College London, UK

14.20 Respond: A novel model for delivering equitable healthcare to asylum-seekers in the UK

Olivia Farrant, University College Hospital, UK
Dr Paola Cinardo, Dr Nicky Longley, Dr Sarah Eisen, University College London Hospitals NHS FT, UK
Allison Ward, Royal Free London NHS Foundation Trust; University College Hospital NHS Foundation Trust; Central and North West London NHS Foundation Trust, UK

14.40 Access Navigators: Taking the mystery out of accessibility

Anne Weidman, Access Navigators / JSA Design, USA
Todd Hansen, Access Navigators / JSA Design, USA

15.00 Panel discussion

15.30–16.00 VIDEO + POSTER GALLERY, COFFEE AND NETWORKING



Session 25

Equitable design at all scales

Chair: Katie Wood, Arup, UK

16.00 Scale jumping: Aligning building-level and community-level strategies for health equity and climate change resilience

Angela Loder, International WELL Building Institute, USA
Lydia Szewczyk, International WELL Building Institute, USA
Tina Lindh, Castellum, Sweden
Jeff Risom, Gehl, Denmark/USA

16.20 A neighbourhood in a building: Japanese perspectives to reduce social isolation in high density

Alice Covatta, Universite de Montreal, Canada

16.40–17.00 Panel discussion

Stream 7 will be brought to a close at 17.00, whereupon delegates are invited to return to the Wolfson Theatre for the day's closing plenary session (17.00–17.45).

Stream 8 begins at 10.45 in the Sloane Room, after the day's opening plenary session (08.45–10.15).



Session 26

Designing cities for older people

Chair: **Jeremy Porteus**, Housing LIN, UK

10.45 **Healthy ageing and diminishing health inequalities through housing co-operatives for seniors**
Dr Jeannette Nijkamp, Hanze University of Applied Sciences Groningen, Netherlands

11.05 **Design for understanding – on the example of descriptions of training exercises for the elderly**
Christian Lunger, Motasdesign, Austria

11.25 **Older pedestrians' physiological reactions are indicative of stressful and non-stressful urban built environment conditions**
Dr Alex Torku, Kingston University London, UK

11.45 **Factors associated with building resiliency in older people: A cross-sectional mixed method study of Malaysian**
Dr Ooi Pei Boon, Sunway University, Malaysia

12.05 **Panel discussion**

12.30–14.00 **VIDEO + POSTER GALLERY, LUNCH AND NETWORKING**



Session 27

Child-friendly cities

Chair: **Julia Thrift**, Town and Country Planning Association, UK

14.00 **Child-friendly neighbourhoods**
Mark Collins, HLM Architects, UK
Noor Itrajky, HLM Architects, UK

14.20 **Co-designing a greener, fairer, and stronger community for children's wellbeing**
Matluba Khan, Cardiff University, UK
Tom Smith, Cardiff University, UK

14.40 **The equality of child-led design**
Beth Cooper, Timberplay, UK

15.00 **Panel discussion**

15.30–16.00 **VIDEO + POSTER GALLERY, COFFEE AND NETWORKING**



Session 28

Designing for young people

Chair: **Mel Jacobson Cox**, HLM Architects, UK

16.00 **Greenspace and us: Using participatory and creative approaches to understand access to greenspace for teenage girls**

Lizzie Moore, Oxfordshire County Council, UK
Emily Jiggins, Oxfordshire County Council, UK
Nafeesa Hussain, Oxfordshire Youth Enterprise (Name It Youth Project), UK

16.20 **Embracing diversity and inclusion in an urban young-adult mental health hub**
Deanna Brown, Stantec, Canada
Robyn Whitwham, Stantec, Canada

16.40–17.00 **Panel discussion**

Stream 8 will be brought to a close at 17.00, whereupon delegates are invited to return to the Wolfson Theatre for the day's closing plenary session (17.00–17.45).

VIDEO + POSTER GALLERY

The cultured surroundings of the Osler and Long Room will play host to the Video + Poster gallery.

Featuring an array of visual and dynamic presentations on scientific research, cutting-edge policy, technological innovations and landmark urban design projects, the Video + Poster gallery will be on display throughout the Congress, providing ample opportunity for delegates to peruse at their leisure inbetween sessions.



- P01 Taming the concrete jungle – finding new meaning in grey space**
John Allison, Motion to Mind, UK
- P02 CONF.I.A.N.Ç.A. | a moment of stillness, self-reflection and connection in the ever-moving reality of modern societies**
Vicky Simitopoulou, DUTH, Department of Architectural Engineering, IAAC, Spain
- P32 Leveraging Green Globes certification for sustainable and healthy workplaces**
Blake Jackson, Stantec, USA
- P06 Circle of Health – expanding Berlin's medical care**
Ann-Kathrin Salich, Nickl & Partner, Germany
- P07 Why do we dig gardens?**
Kirsti Ashworth, Lancaster University, UK
Michelle Tester-Jones, University of Exeter, UK
Annabelle Edwards, Lancaster University, UK
Mat Cottam, The Conservation Volunteers, UK
- P08 Eat well to be well**
Bernardine Farrell, Foodturisitic, UK
- P15 Theoretical and practical applications of the theory of life circle in China**
Yilin Song, Xuan Liu, Tianyang Gao, Tianjin University, China
- P09 Understanding factors that influence green space access**
Ngoc Thuy Nguyen, Tilly Collins, Alexandra Collins, Caitlin Hinson, Imperial College of London, UK
- P22 Safety and the vulnerable road user**
Orla Fahey, Royal College of Art, UK

- P23 Ecourbanism: A whole-systems approach to city building and repair**
Luke Engleback, Studio Engleback, UK
- P04 Learning from Mark Rylance**
Felicia Cleper-Borkovi, Arup; Felicia Cleper Borkovi, USA
- P13 Designing for changing workforce needs**
Stuart Turk, Silver Thomas Hanley, Australia
- P12 Restorative gardens in healthcare facilities and their effects on dementia patients' recovery**
Nisrina Muthi Meidiani, University College London, UK
- P16 The living street**
Noor Itraiky, John Richards, HLM Architects, UK
- P14 Between Abandonment and rebirth: Categories of urban space**
Cecilia Zecca, Royal College of Art, UK
Chris McGinley, Royal College of Art, UK
- P20 Healthy cities status analysis by a survey for healthy city managers in Korea**
Bicna Lee, Gahurn Lee, Lee Su Jin, Yumi Oh, Korea Health Promotion Institute, Korea
- P29 Future living: Combating loneliness with wellness-driven architecture**
Alex Wessling, HDR, Australia
- P31 Future health challenges for cities**
Gerard Briscoe, Gail Ramster, Royal College of Art, UK

- P31 NATURE & EMOTION: Multidisciplinary narratives for life-centred design and systemic change.**
Natasha Reid, Matter . Space . Soul, UK
- P18 Walkability and mental health: An analysis of Ankara, Turkey**
Segah Sak, Gozdenur Teke, I.D. Bilkent University, Turkey
- P19 Designing for women in crisis: An understanding of key touch-points for women utilising crisis services in Scotland**
Kirsty Watt, HerCollective / Groves Raines Architects Studio, UK; Amelia Powell, HerCollective / Babergh and Mid Suffolk District Councils, UK
- P21 Expanding access to urban gardening – the contributions of community gardens and adoption/sharing schemes**
Yi Zhang, Tilly Collins, Imperial College London, UK
Jazz Browne, Nubian Life Resource Centre, UK
Jamie Hilton, Fulham Good Neighbours, UK
- P25 Waiting Well project**
Dr Rosie Rowe, Oxfordshire County Council, UK
Louise Cornwall, Hightown Surgery, UK
Ellen Fallows, Brackley Medical Centre, UK
- P26 Wayfinding in support of active travel**
Rosie Rowe, Oxfordshire County Council, UK
Mike Clay, Cherwell District Council, UK
- P28 Mapping food deserts and Covid vulnerability**
Rupert Allan, NHS Wales; Cwm Taf Morgannwg University Health Board, UK

WORKSHOPS

10–11 OCTOBER 2022, BREAKFAST AND LUNCHTIME

MONDAY LUNCHTIME WORKSHOP

12.40–13.50 **Introducing future generations of the public health spatial planning workforce in translating healthy places evidence into practical reality**

Organised by:



Room: Dorchester Library

There is a long-standing recognition that the relationship between the environment and people's wellbeing is complex and requires multidisciplinary approaches.

The role and fundamental skillsets of the workforce are being challenged by the need to meet both the changing legislative and policy frameworks, and to meet changing priorities towards healthier places and environment. But the status quo of silo mentalities among the workforce of public health and built environment practitioners is ineffective, and existing approaches are not fit for purpose for the outcomes society demands for healthier living. This is partly because of the systemic lack of discourse on the cross-disciplinary skills and competencies necessary to realise healthy places.

To achieve healthy places, practitioners must have a working understanding of each other's legislative mechanisms and delivery tools. Public health practitioners must be able to influence and direct the planning and development process. And planners must understand how policies or decisions will impact on population health and wellbeing. This professional evolution is manifesting in the emergence of a workforce generation at the interface of planning and public health.

Organisations from this workshop panel are supporting the national and local capacity building of leaders and practitioners as an emerging breed of public health spatial planners to work at the interface between planning, transport, development, and/or regeneration and health teams.

Panel:



Lourdes Madigasekera-Elliott, East Sussex Council, UK



Ric Bravery, City of Wolverhampton Council, UK



Gemma Hyde, Town and Country Planning Association, UK



Catriona MacRae, Haringey Council, UK

TUESDAY LUNCHTIME WORKSHOP

12.40–13.50 **Radically refocusing on people and nature will save our cities**

Organised by:

Ryder

Room: Council Chamber

Cities are not made by architects; inclusive, vibrant communities and healthy ecological systems make thriving cities. Join us for a lively expert panel discussing the key principles to shaping healthier, greener, more resilient communities that embed social, economic and environmental regeneration at their heart.

We will champion a regenerative approach to placemaking with a session broadly focused on three areas:

We'll discuss the value of a data-rich, evidence-based approach to intelligent masterplanning. We've a wealth of data, modelling and forecasting at our disposal – with this comes some pitfalls but even greater opportunities to create healthier, more resilient cities.

We'll reimagine how we can enable and empower the communities that make up our cities through design interventions that focus on social interaction, connection to nature and inclusivity. By focusing on communities, we can ensure we enable those most in need to thrive, we can reimagine cities as learning environments, and breathe new life into often underutilised heritage and cultural assets.

Finally, we'll look to green infrastructure and nature-based design solutions as the lynch pin, the critical intervention needed to regenerate and evolve our urban centres, and the key to creating healthier and more resilient environments. We'll explore how radically rethinking and embracing green infrastructure will future proof our cities and improve our personal, societal and environmental health.

Panel:



Dr Oliver Jones, Ryder Architecture, UK

TUESDAY LUNCHTIME WORKSHOP

12.40–13.50 **Mechanisms to change behaviour in order to achieve healthier places**

Organised by:

THE ACADEMY OF URBANISM

Room: Dorchester Library

Before we can achieve healthier cities, we need to think about changing behaviours at many different levels. Working at the micro-scale, for example, neighbourhoods and smaller communities as in a rural setting, would provide us with the tools to implement measures in much bigger settings, such as cities.

This panel's discussion will focus on this major hurdle and the need for everyone – planners, developers, local authorities, and citizens – to change our approach towards tackling health. Why is it that Utrecht has made health the lynchpin of its myriad city strategies? Yet in the UK (while lip service is often paid to healthier places) the first questions put forward are invariably: "what are we going to do about traffic?"; or "how can we achieve a stronger economy?"; or concerns about housing delivery, etc.

The panel will explore theory, policy and practical case studies in an effort to break this behavioural deadlock and to provide some direction towards achieving the objective of healthier cities.

Chair:



Andreas Markides, Transport Planning Specialists, UK

Panel:



Kat Hasler, The Scottish Government, UK



David Rudlin, URBED, UK



Emma Wilson, Sovereign Housing Association, UK



Joan Devlin, Belfast Healthy Cities; WHO European Healthy Cities Network Belfast

By blending 'in person' participation with a fully immersive digital experience, this year's Congress will create new and enhanced opportunities for knowledge exchange, professional development and networking.

The 6th Healthy City Design International Congress is returning to the prestigious Royal College of Physicians in London, UK – and excitement and anticipation are building at the prospect of meeting in person again for the first time since the pandemic.

The venue is expected to sell out quickly, as world-leading practitioners, researchers and policy thinkers from around the world will join the event 'in person' as delegates and as speakers to give talks, present posters, and participate in panels and workshops.

But with a live conference stream broadcast into our fully integrated virtual event platform, delegates will now also have the choice of whether to participate in person or virtually, providing new opportunities to access talks and expert content from anywhere in the world.

'In person' and 'virtual' delegates will enjoy exceptional networking and professional development opportunities, building knowledge of the socio-economic global context, and emerging practice, skills and core competencies in designing and planning healthy communities, sustainable development, and urban infrastructure.

INTUITIVE USER INTERFACE

Easy to engage in sessions no matter where you are

Our intuitive hybrid event platform is designed to highlight key events and enable attendees to drill down to sessions of specific interest. Virtual and in-person attendees can engage in sessions using engagement tools such as live polls, chats and Q&A.

NATIVE MOBILE APP

A fully immersive experience

In-person and virtual attendees will be able to download a native, branded mobile application to browse session listings, connect and message other participants, both onsite and virtually, and view sponsors, partners, exhibitors and the programme agenda. The mobile app complements the in-person experience while enabling virtual attendees to engage remotely.

ON-DEMAND CONTENT

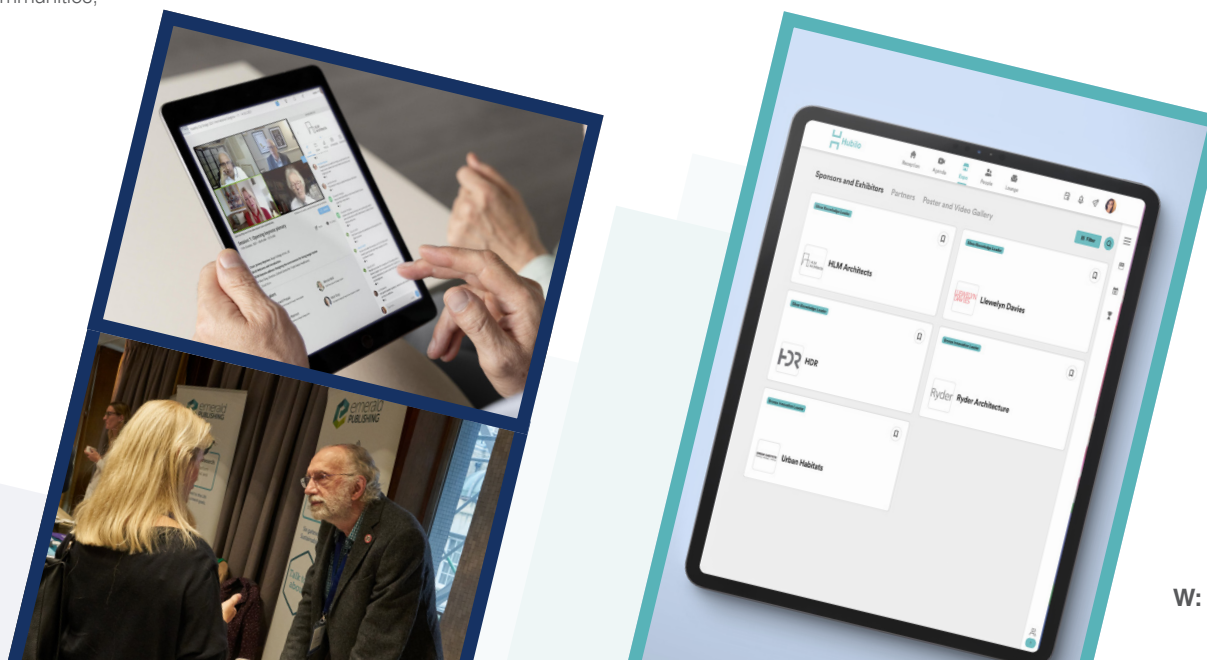
Choose when to view talks and sessions

All registered participants will also receive virtual access to both 'live' streaming and video recordings of all sessions for 'on-demand' viewing for two months after the event. So, as an in-person delegate, choosing one parallel session or stream no longer means you miss viewing the talks in the other streams.

CONNECT WITH MORE PEOPLE

Foster connections both online and offline

Connect and foster engagement with fellow attendees virtually and in person throughout the event. Attendees have multiple options to connect and message other attendees in person or connect with each other virtually via 1-1 chats, video calls and lounges.



DELEGATE REGISTRATION

A range of in-person tickets are available in three categories: Public Sector; Event Partner; and Commercial. Virtual-only tickets are also available. Registration is open now with Early Bird savings until 27 September. Visit www.healthycitydesign.global to register today.

Public Sector and Event Partner discounts

Eligible Event Partner members include: The Academy of Urbanism; ISGlobal Barcelona Institute for Global Health; University College London, The Bartlett Institute for Environmental Design and Engineering; Design Council; Health & Greenspace; International Society for Urban Health; Town and Country Planning Association; LDN Collective; Health & Wellbeing in Planning Network; Housing LIN; The International Society of City and Regional Planners (ISOCARP); C3 Collaborating for Health; Mike Nightingale Fellowship; Urban Design Group; The Centre for Urban Design and Mental Health; and WorkTech Academy. Please select the correct ticket type at www.healthycitydesign.global

Group discounts

Group discounts are available for all categories at the following rates: Discounts for 3 (10%); 5 (15%) or 10 (25%)

To apply please contact info@salus.global

Please note: A discount code may only be used once by the same user. All ticket prices are exclusive of VAT.

'In-person' registration

Commercial Rate:

Early Bird rates (until 27 September):	2-day ticket: £495
	1-day ticket: £325
Standard rates (from 28 September):	2-day ticket: £595
	1-day ticket: £425

Public Sector and Event Partner Rate:

Early Bird rates (until 27 September):	2-day ticket: £395
	1-day ticket: £225
Standard rates (from 28 September):	2-day ticket: £495
	1-day ticket: £325

'Virtual' registration

Single Rate:

Early Bird rates (until 27 September):	2-day ticket: £145
	1-day ticket: £85
Standard rates (from 28 September):	2-day ticket: £195
	1-day ticket: £135

W: www.healthycitydesign.global

Evening Networking Dinner, Live Music and Keynote Address by Lord Best

Individual dinner place: £95

For group dinner bookings of three or more, a 10% discount is available by contacting info@salus.global



THE PROGRAMME COMMITTEE

**Rachel Cooper OBE PhD**

Professor of Design Management and Policy,
Lancaster University, UK

**Helen Pineo PhD, MRTPI, FRSA**

Associate professor in Healthy and Sustainable Built Environments,
University College London, UK

**Blake Jackson AIA, LEED Fellow,
WELL Faculty, CPHC**

Sustainability design leader, Stantec Architecture, USA

**Oliver Jones PhD**

Research director,
Ryder Architecture, UK

**Clare Wildfire**

Global practice lead for cities,
Mott MacDonald, UK

**Giselle Sebag MPH, LEED AP ND**

Executive director,
International Society for Urban Health, USA

**Harry Knibb MRTPI**

Development director,
Oxford Properties, UK

**Carolyn Daher MPH**

Co-ordinator, Urban Planning, Environment and Health Initiative,
Barcelona Institute for Global Health, Spain

**Dr Stephane Sadoux PhD**

Deputy director, LabEx AE&CC, Grenoble School of
Architecture (ENSAG), Grenoble Alpes University, France

**Janet Sutherland**

Director,
The Academy of Urbanism, UK

**Katie Wood**

Director, operations consulting and lead on health
and wellbeing, Arup, UK

**Audrey de Nazelle PhD**

Senior lecturer, Centre for Environmental Policy,
Imperial College London, UK

**Marcus Grant**

Editor-in-chief,
Cities and Health, UK

**Rhiannon Corcoran PhD**

Professor of Psychology and Public Mental Health,
University of Liverpool, UK

**Jose Siri PhD, MPH**

Epidemiologist, global, urban and planetary health specialist,
USA

Advisory Group

John Zeisel PhD

President, Hearthstone Alzheimer Care, USA

Michael Chang

Programme manager, Office for Health Improvement and
Disparities, UK

Sunand Prasad

Chair, UKGBC; Principal, Penoyre & Prasad, UK

Jeremy Porteus

Chief executive, Housing LIN, UK

Chris Liddle

Group chair, Covalent Group and director, HLM, UK

Julia Thrift

Director of healthy place making, Town and Country
Planning Association (TCPA), UK

Robert Huxford

Director, Urban Design Group, UK

Hugh Barton MPhil, DipTP, MRTPI, FRSA

Emeritus professor, WHO Collaborating Centre, UWE, UK

Layla McCay MD

Director, Centre for Urban Design and Mental Health, UK

Montira Pongsiri PhD, MPH

Advisor, Climate change and health, Save the Children,
USA

Derek Clements-Croome

Emeritus professor, University of Reading, UK

Christine Hancock

Founder, C3 Collaborating for Health, UK

Peter Ellery PhD

Senior advisor, National Wellness Institute, USA

Angela Loder PhD

Vice-president, research, International WELL Building
Institute, USA

Tye Farrow

Senior partner, Farrow Partners, Canada

Susanne Pini

Principal, director of retail and mixed use, HDR, Australia

For further enquiries on the event programme,
sponsorship or exhibition opportunities, contact:

SALUS Global Knowledge Exchange

E: info@salus.global • T: +44 (0)1277 634176

www.healthycitydesign.global

THE VENUE: A MODERNIST MASTERPIECE

Founded in 1518, the Royal College of Physician's current headquarters is a Grade 1 listed building in Regent's Park, designed by architect Sir Denys Lasdun and opened in 1964. Considered a modernist masterpiece, it is one of London's most important post-war buildings. In 1992, Sir Lasdun was awarded the Royal Institute of British Architects' Trustee Medal in recognition of his work at the RCP, considered to be "the best architecture of its time anywhere in the world".

Sir Lasdun won the competition to design the new headquarters in 1959. He was surprised at being asked to design for such a traditional body, given his modernist philosophy, and he made it clear that he would not create a classical-style building.

DISCOUNTED ROOM RATES FOR DELEGATES

We have agreements with two hotels for discounted room rates for delegates at the Congress. Rooms are limited and available to book until a provisional date of 15 September.

The two hotels are the Holiday Inn Regents Park and the Melia White House Hotel. Both hotels are within walking distance of the conference venue.

On receipt of your registration, a website link will be provided to enable you to book your accommodation at the below rates. Please book early to avoid disappointment.

Holiday Inn Regents Park

Single room with breakfast £225 (without breakfast £215)

All room rates are VAT inclusive.

Melia White House Hotel

Deluxe room with breakfast £255 (without breakfast £240)

Premium room with breakfast £285 (without breakfast £270)

All room rates are VAT inclusive.

HEALTHY CITY DESIGN INTERNATIONAL

RESEARCH • POLICY • PRACTICE

10-11 OCTOBER 2022

ROYAL COLLEGE OF PHYSICIANS, LONDON

For online registration and fees, please visit:

W: healthycitydesign.global

Extended early-bird discounts are available until 27 September 2022,
along with special discounts for public-sector delegates

Both in-person and virtual tickets available

For sponsorship and exhibition enquiries, contact: info@salus.global

WITH THANKS TO OUR SUPPORTING EVENT PARTNERS AND SPONSORS

Silver Knowledge leaders



Bronze Innovation leaders



URBAN HABITATS
thinking | strategy | making

Journal partner



Event partners



For further enquiries on the event
programme, sponsorship or exhibition
opportunities, contact:

SALUS Global Knowledge Exchange

E: info@salus.global

T: +44 (0)1277 634176

healthycitydesign.global

